



GRK 4 Polyclonal Antibody

Catalog No	YP-Ab-14765
Isotype	IgG
Reactivity	Human;Rat;Mouse;
Applications	IHC;IF;ELISA
Gene Name	GRK4
Protein Name	G protein-coupled receptor kinase 4
Immunogen	Synthesized peptide derived from GRK 4 . at AA range: 10-90
Specificity	GRK 4 Polyclonal Antibody detects endogenous levels of GRK 4 protein.
Formulation	Liquid in PBS containing 50% glycerol, 0.5% BSA and 0.02% sodium azide.
Source	Polyclonal, Rabbit,IgG
Purification	The antibody was affinity-purified from rabbit antiserum by affinity-chromatography using epitope-specific immunogen.
Dilution	IHC: 1/100 - 1/300. ELISA: 1/40000.. IF 1:50-200
Concentration	1 mg/ml
Purity	≥90%
Storage Stability	-20°C/1 year
Synonyms	GRK4; GPRK2L; GPRK4; G protein-coupled receptor kinase 4; G protein-coupled receptor kinase GRK4; IT11
Observed Band	
Cell Pathway	Cytoplasm. Cytoplasm, cell cortex. Both at the cell surface and dispersed in the cytoplasm under basal conditions. Receptor stimulation results in the internalization of GRK4 to the perinuclear area, where colocalization with DRD3 is observed strongly at 5 and 15 minutes. DRD3 and GRK4 colocalize in lipid rafts of renal proximal tubule cells.
Tissue Specificity	Isoform 1, isoform 2, isoform 3, and isoform 4 are expressed in testis. Isoform 4 is expressed in myometrium.
Function	catalytic activity:ATP + [G-protein-coupled receptor] = ADP + [G-protein-coupled receptor] phosphate.,function:Specifically phosphorylates the activated forms of G protein-coupled receptors. GRK4-alpha can phosphorylate rhodopsin and its activity is inhibited by calmodulin; the other three isoforms do not phosphorylate rhodopsin and do not interact with calmodulin.,similarity:Belongs to the protein kinase superfamily. AGC Ser/Thr protein kinase family. GPRK subfamily.,similarity:Contains 1 AGC-kinase C-terminal domain.,similarity:Contains 1 protein kinase domain.,similarity:Contains 1 RGS domain.,tissue specificity:Testis, and in a lower extent in other tissues including brain cortex and striatum.,

Background

This gene encodes a member of the guanine nucleotide-binding protein (G protein)-coupled receptor kinase subfamily of the Ser/Thr protein kinase family. The protein phosphorylates the activated forms of G protein-coupled receptors thus initiating its deactivation. This gene has been linked to both genetic and acquired hypertension. Several transcript variants encoding different isoforms have been found for this gene. [provided by RefSeq, Nov 2013],

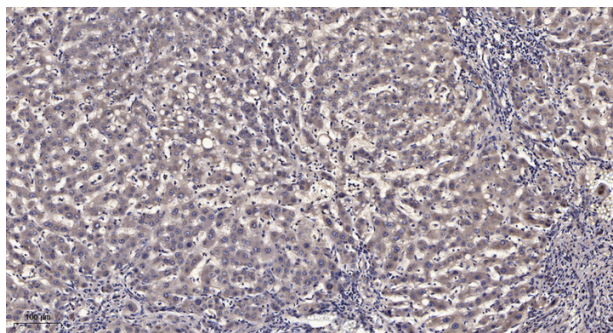
matters needing attention

Avoid repeated freezing and thawing!

Usage suggestions

This product can be used in immunological reaction related experiments. For more information, please consult technical personnel.

Products Images



Immunohistochemical analysis of paraffin-embedded human liver cancer. 1, Antibody was diluted at 1:200(4° overnight). 2, Tris-EDTA, pH9.0 was used for antigen retrieval. 3, Secondary antibody was diluted at 1:200(room temperature, 45min).